



BACKYARD TORCH



- ✓ Mosquito protection you don't spray on
- ✓ Repels mosquitoes, black flies and flying insects
- ✓ Provides 15 x 15 ft of repellency, the size of an average deck
- ✓ LEDs provide safe, ambient light
- ✓ Each mat lasts a maximum of 4 hours

OTHER GREAT THERMACELL PRODUCTS



IDEAL USES



ThermaCELL®



BACKYARD TORCH

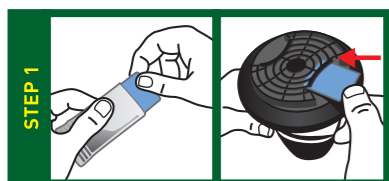
DIRECTIONS FOR USE

It is a violation of Federal law to use this product in a manner inconsistent with its labeling.

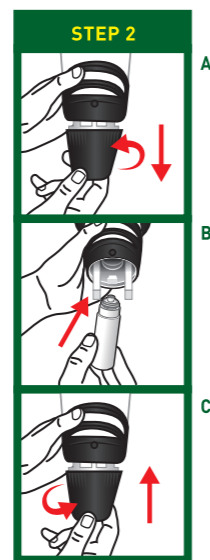
TO ASSEMBLE TORCH POLE OR LANTERN STAND:

- To use the torch, assemble the six pole pieces by inserting and turning pieces until tight. Insert pole into the ground a minimum of 6 inches until secure.
- To use the torch as a lantern, insert torch in the lantern stand provided and place on an outdoor stable surface.

TO USE THE MOSQUITO REPELLENT:



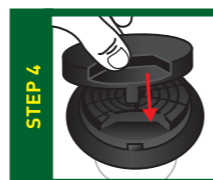
- 1. Insert repellent mat:** Remove protective cover from torch. Remove one ThermaCELL® Mosquito Repellent mat from wrapper. Insert mat under grill. Mats last a maximum of 4 hours and change from blue to white when active ingredient has been exhausted.



- 2. Insert ThermaCELL® butane cartridge:** Rotate torch base to the left so that arrow points to "OPEN" and pull base from globe [A]. Remove ThermaCELL® cartridge cap and insert cartridge into opening between battery compartments [B]. Turn cartridge clockwise until it stops. Replace base, turning until arrow points to "CLOSE" [C].

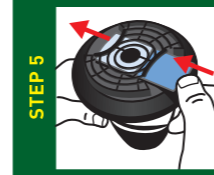


- 3. Turn on:** Rotate torch collar to the right until indicator line points to "ON". The gas will begin to flow. Wait 5 to 10 seconds then rotate torch collar until indicator line points to "START" and you hear a clicking sound. To verify that the mosquito repellent has been activated, look at the oval view hole located on the torch collar to the right of the "START" button. An orange light will glow. Place torch on pole or lantern stand. Do not touch the grill; it will be hot after a few minutes. Some visible vapor will appear during use. This is normal.

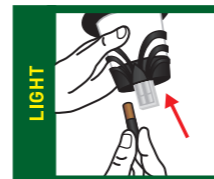


- 4. Turn off:** When finished using, rotate the torch collar to the left until the indicator line points to "OFF".

Replace protective cover by inserting tab on the cover into the small oval cutout on torch collar. You may replace protective cover even if grill is still warm. Replacing protective cover on torch insures product is shut off and protects torch from rain, dirt and debris. Torch cannot be turned on when protective cover is in place. Leave torch outside or store.



- 5. To replace a mat:** When the mat turns white, it is time to replace it. When replacing the mat, make sure indicator line is in the "OFF" position and allow grill to cool. Push the used mat out by inserting a fresh mat.



- To use the light:**
 - Remove lantern from torch pole or lantern stand. Rotate torch base so that arrow points to "OPEN" and pull base from globe. Insert 4 AAA-size batteries (not included) in the battery compartments according to the "+" "-" signs. The batteries power 4 LED lights and will provide torch light for a maximum of 50 hours.

- Locate the black button on the side of the torch. Push button to turn light on and off. If torch light does not turn on, check batteries.
- Replace base, turning until arrow points to "CLOSE". Place torch on pole or lantern stand.

Troubleshooting: If torch does not turn on, verify that there is no orange glow in the view hole. If there is no orange glow, rotate indicator line back to the "ON" position and repeat rotation to the "START" position two to three times in rapid succession. If there is still no orange glow visible in the view hole, make sure the cartridge is completely screwed into place. Also check the amount of fuel in the cartridge. If cartridge is empty or near empty, remove cartridge and replace with a new ThermaCELL® cartridge. Then repeat step #3.

Useful Tips:

- Allow 10 to 30 minutes, depending upon the size of the area, for product to take effect.
- This product works well in outdoor areas where there is minimal air movement, such as decks, unenclosed porches, patios and yards. Product may be used for camping.
- Use one torch per each 225 square feet (an area 15' x 15') or 15' in diameter.
- Torch provides light and repels mosquitoes, black flies, flying insects and bugs.
- Batteries power the light; heat from the ThermaCELL® cartridge activates the repellent mat and provides mosquito repellency for an area the size of an average deck or campsite.

Use Restrictions: Only for outdoor use as an insect repellent. Do not use indoors, in tents or in any enclosed area. Do not insert anything other than ThermaCELL® mats into the torch. Cover or remove all exposed food. Do not leave torch unattended or use in windy conditions. Do not expose torches or mats to rain. When using lantern stand, place torch on a flat, stable surface with the grill facing upward. Clean with a damp cloth only when the torch is cool and inactive. Butane cartridges other than ThermaCELL® cartridges will not work in this torch.