

Model B40
Spring Air Rifle
OWNER'S MANUAL



PLEASE READ THIS MANUAL BEFORE USING YOUR NEW RIFLE. IT CONTAINS IMPORTANT SAFETY INFORMATION AND INSTRUCTION ON ADJUSTMENT AND MAINTAINS.

MADE IN CHINA

▲WARNING: This air rifle is not a toy and may cause death or serious injury if misused or used carelessly. May be dangerous up to 600 yards(549 meters). Read all instructions before using. This air weapon requires adult supervision if the user is under 14 years old. The supervision must be at least 21 years old. The purchaser and user have the responsibility to conform to all laws concerning the use and ownership of this air weapon.

Felt or similar cleaning pads must not be fired from this rifle unless a pellet is inserted behind the pad. Alternatively, clean the barrel with a pull through. Do not fire this rifle without a pellet in the barrel and only use lead pellets.

***** SAFETY CODE *****

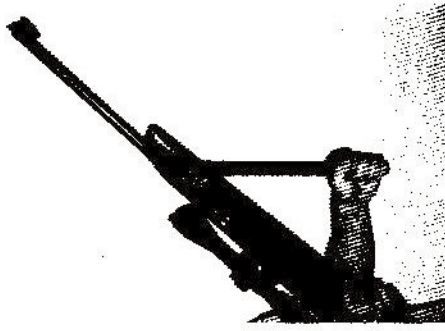
- 1- Treat this air rifle as if loaded.
 - 2- Never point it at anyone, even if unloaded.
 - 3- Never leave this rifle unattended when cocked or loaded.
 - 4- Always be sure of what lies beyond your target.
 - 5- Always conduct yourself in a sportsman –like manner.
- Always be aware that your actions will be under the scrutiny of other members of the public who may not share your enthusiasm for air weapons. Bad practices promote bad publicity. Do not jeopardize your future enjoyment by misusing this weapon.

1. PECIFICATIONS

Mechanism/Action	spring
Calibre	4.5mm(.177) 5.5mm(.22)
Velocity	(.177 caliber): 1050fps (.22 caliber): 850fps
Weight	4.2kg
Barrel Length	340mm (13.4")
Overall Length	1050mm(41.34")
Trigger	Adjustable, Two stage

2. OPERATING INSTUCTIONS

To cock the rifle, hold securely in one Hand and with the other pull the cocking arm downwards and back until the trigger mechanism engages and the safety catch button pops out. The button has an indication groove, coloured green, to show when it is correctly engaged. If the green groove is not showing the rifle is not fully cocked and not operate.



In addition to the safety catch that disables the trigger mechanism, this rifle has a "safety lock" that provides a full mechanical lock to the Sliding breech at the end of the cocking strock. This safety device gives additional security when inserting a pellet, however the user is still advised to keep hold of the cocking arm as illustrated above.

Be sure that you do not obstruct the safety catch button and prevent it from working during the cocking process.

Do not hold the rifle by the pistol grip whilst cocking, you may accidentally touch the trigger and cause the rifle to fire during the loading sequence

▲WARNING: Check the safety button before inserting a pellet.
Keep hold of the cocking arm whilst inserting a pellet.

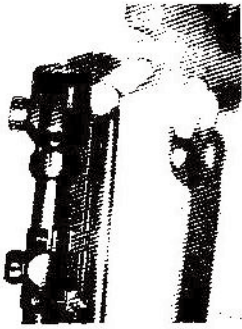
The cocking action opens the breech and exposes the barrel ready to insert a pellet



To close the cocking arm it is necessary to depress the front end of the safety lock and keep it depressed until the cocking arm is fully closed. Ensure that the ident ball is located in the ident. Serious damage will result if the rifle is fired with the cocking arm partly open.

Release the safety catch by pushing the button in fully. The rifle is now ready to fire.

The safety catch cannot be re-engaged without re-cocking the rifle so do not release the safety catch before you need to.



▲WARNING: Your air rifle is now loaded and ready to fire. Keep the air rifle "on safe" until you are ready to shoot. Do not point at anything you don't intend to shoot.

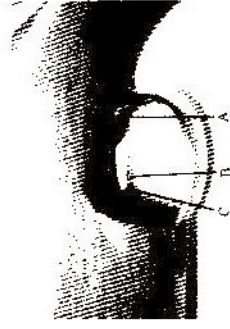
3. TRIGGER ADJUSTMENT

The trigger is two stage with adjustments on both stages. Be aware that adjustment to one screw will effect the adjustment of the other and the trigger will only work properly if there is the correct balance between the two. If you have no experience in adjusting two stage triggers seek guidance or leave the trigger as set by the factory.

▲WARNING: Incorrect adjustment can make the rifle unsafe.

There are three adjusting screws. Screw(A) the weight of pull screw. This is under the rear of the trigger guard and the guard must be removed to make adjustments. Clockwise movement increase the weight.

Screw(B)&(C)are in the trigger blade itself. Screw(B) adjusts the exact pull-off point. Clockwise decreases the pull-off point.



Screw(C) adjusts the length of first stage travel, again clockwise decreases the length of first stage travel.

Remember that small adjustments will make a noticeable change to the operation of the trigger. Only make 1/4 turn adjustments at a time and test fire the rifle before making further adjustments. Joy down all adjustment on a piece of paper so that you can retrace your steps if necessary.

▲NOTE: If the trigger guard is removed and then replaced. The rear screw(52) must be tightened before the front screw(51). Do not over-tighten the front screw. This screw pulls the action into the stock and only needs to be tight enough to stop movement within the stock.

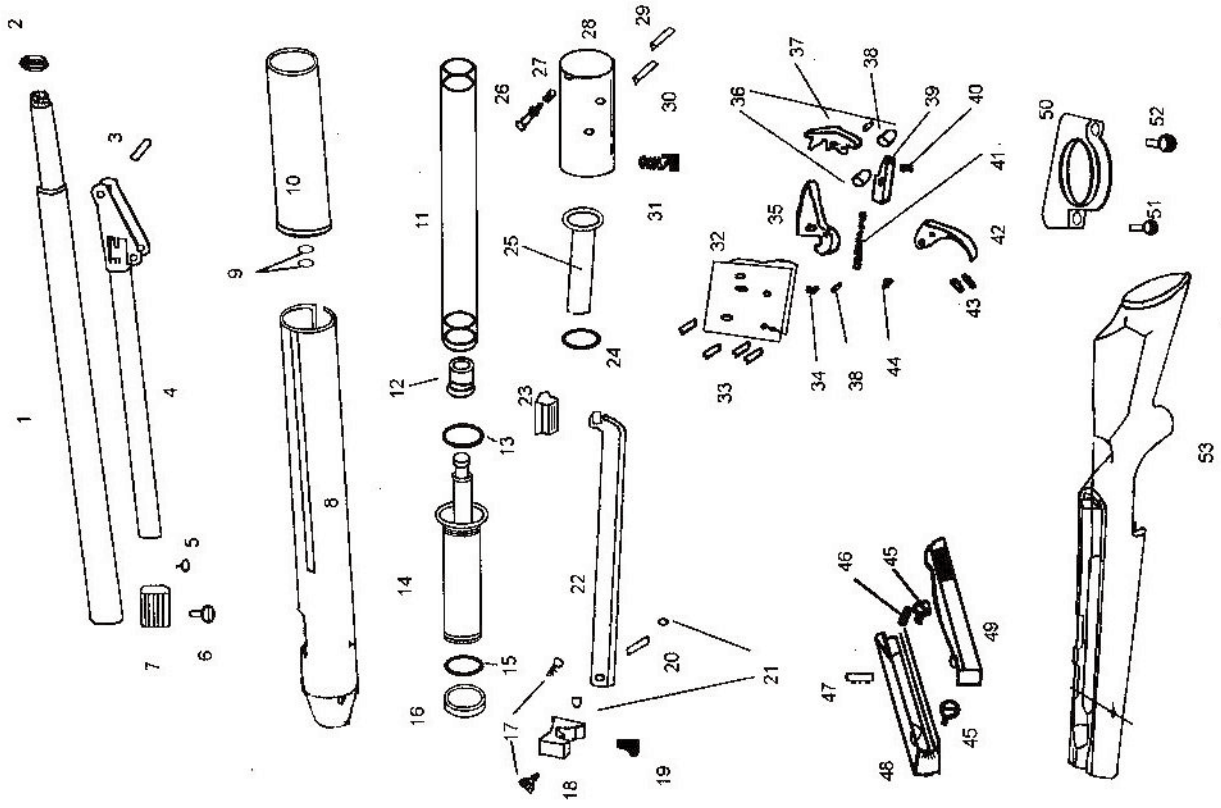
4. GENERAL MAINTENANCE

Regularly check the tightness of all fixings. Do not over-tighten, some parts are made from aluminium, stripped threads will result from over-tightening. Periodically clean the barrel with a good cleaner and pull through.

5. GENERAL LUBRICATION

Regularly apply a few drops of gun oil to the following wear points: Cocking link & cocking arm pivots. Cocking shoe. Compression Tube. It is essential to wipe over the external surfaces of the rifle with a soft oily rag to maintain the high surface finish. Failure to do this will result in surface corrosion.

Regular internal lubrication is not necessary. A small amount of grease is applied on assembly. Re-lubrication will be unnecessary for aderable consi time. If the operation of the rifle becomes rough, stiff or noisy this could be an indication that lubrication is required and should be investigated.



Part No.	DESCRIPTION	Part No.	DESCRIPTION
1	BARREL/TUBE	28	REAR BLOCK
2	BARREL RETAINING NUT	29	REAR BLOCK LOWER RETAINING PIN
3	COCKING ARM PIVOT PIN	30	REAR BLOCK UPPER RETAINING PIN
4	COCKING ARM	31	TRIGGER BLOCK RETAINING BOLT
5	COCKING ARM BUFFER	32	TRIGGER CHASSIS
6	IDENT BALL ASSY SCREW	33	CHASSIS PIN
7	IDENT BALL ASSEMBLY	34	TRIGGER ADJUSTING SCEW
8	MAIN CYLINDER	35	PISTON SEAR LEVER
9	BARREL SEAL	36	CHASSIS BUSH
10	COMPRESSION TUBE	37	UPPER REAR SEAR LOCK
11	MAIN SPRING	38	SPRING RETAINING PIN
12	FRONT MAINSPRING GUIDE	39	TONGUE
13	REAR PISTON BEARING	40	TRIGGER ADJUSTING SPRING
14	PISTON	41	TOP/MIDDLE SEAR SPRING
15	FRONT PISTON BEARING	42	TRIGGER BLADE
16	PISTON SEAL	43	TRIGGER ADJUSTING SCREW
17	FRONT STOCK SCREW	44	ADJUSTING SCEW LOCKING PAD
18	STOCK BRACKET	45	SAFETY LOCK SCREW
19	STOCK BRACKET FIXING SCREW	46	SAFETY LOCK SPRING
20	COCKING LINK PIVOT PIN	47	SAFETY LOCK PIN
21	PIVOT PIN CIRCLE	48	SAFETY LOCK BLOCK
22	COCKING LINK	49	SAFETY LOCK RATCHET
23	COCKING SHOE	50	TRIGGER GUIDE
24	MAINSRING PRE-LOAD WASHER	51	REAR STOCK SCREW
25	REAR SPRING GUIDE	52	TRIGGER GUARD SCREW
26	SAFETY BUTTON	53	STOCK
27	SAFETY BUTTON SPRING		