

# Assembly Instructions For HP-M1000/HP-M900

Date: August 2018

P2A	(A) Pump o-ring assembly	pg.02
P2B	(B) Small piston assembly	pg.03
P2C	(C) Small tube assembly	pg.04
P2D	(D) Pump and desiccant assembly	pg.05
P2E	(E) Pellet probe assembly	pg.06
P2F	(F) Hammer and spring assembly	pg.07
P2G	(G) Power adjustment valve assembly	pg.08
P2H	(H) Side lever action handle assembly	pg.09
P2I	(I) Safety assembly	pg.10
P2J	(J) Trigger and air release valve assembly	pg.11
P2K	(K) Aluminum valve body and pump assembly	pg.12
P2L	(L) Aluminum valve body and big tube assembly	pg.13
P2M	(M) Air chamber extension tube assembly	pg.14
P2N	(N) Aluminum valve body and extension tube assembly	pg.15
P2O	(O) Inner barrel assembly	pg.16
P2P	(P) Shroud barrel assembly	pg.17
P2Q	(Q) Rear stock assembly	pg.18
P2R	(R) Gun body and rear stock assembly	pg.19
P2S	(S) Leakage and pre-pressure test	pg.20
P2T	(T) Front stock cover assembly	pg.21
P2U	(U) Spare parts and packaging	pg.22

(A) Pump o-ring assembly

Process Code: P2A

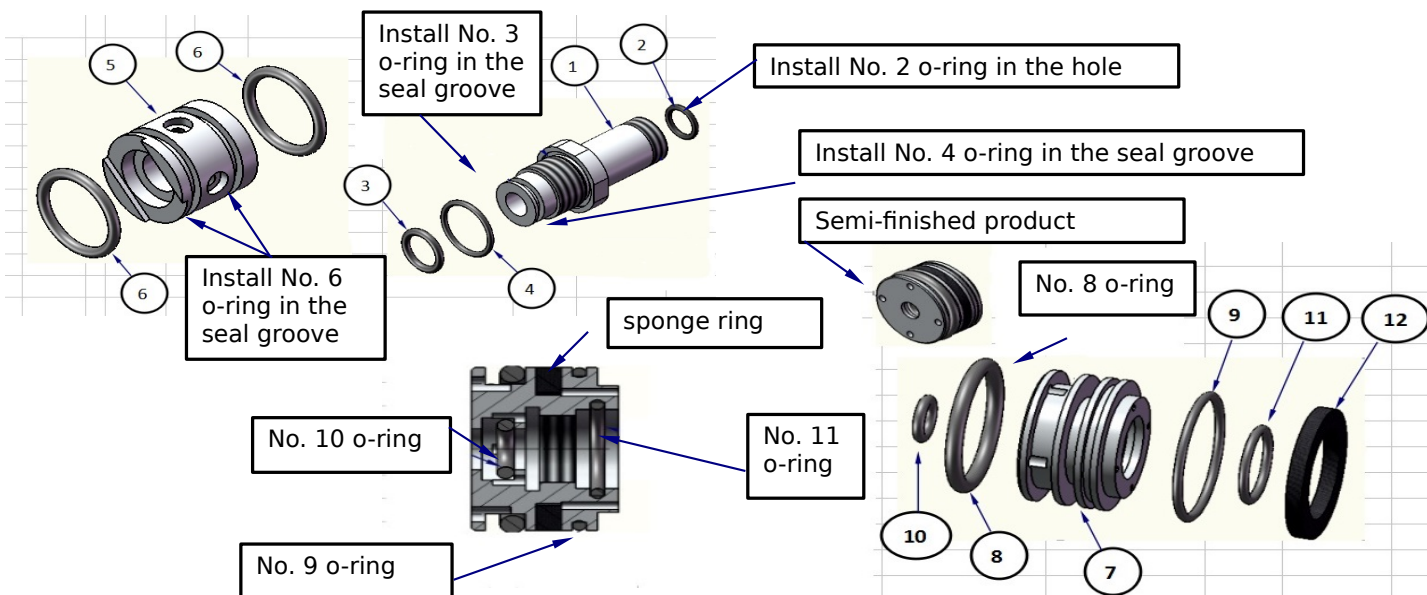
Date: August 2018

Video Code: V-P2A

Version: 1.0

Product Code: HP-M1000/HP-M900

Product Name: P2 (.177/.22)



No	Material Name	Material Code	Quantity	Remark
1	Rear fixed axle	000P2-021-W-01	1	
2	NBR o-ring $\phi 1.5 \times \phi 11$ hardness 90°	000P2-008-X-00	1	
3	PU o-ring $\phi 2 \times \phi 14$ hardness 90°	000P2-049-X-00	1	
4	NBR o-ring $\phi 1.5 \times \phi 18$ hardness 90°	000P2-025-X-00	1	
5	Rear fixed axle	000P2-020-W-00	1	
6	NBR o-ring $\phi 3.5 \times \phi 33$ hardness 90°	000P2-027-X-00	2	
7	Rear movable sleeve	000P2-018-W-00	1	
8	NBR o-ring $\phi 3.5 \times \phi 34$ hardness 90°	000P2-003-X-00	1	
9	NBR o-ring $\phi 2 \times \phi 33$ hardness 90°	000P2-023-X-00	1	
10	NBR o-ring $\phi 2.4 \times \phi 12$ hardness 90°	000P2-002-X-00	1	
11	NBR o-ring $\phi 2 \times \phi 20$ hardness 90°	000P2-010-X-00	1	
12	Rear movable sleeve sponge ring $\phi 35 \times \phi 22 \times 4$ (oil proof and high oil absorption)	000P2-003-U-00	1	
13				
14				
15				

(B) Small piston assembly

Process Code: P2B

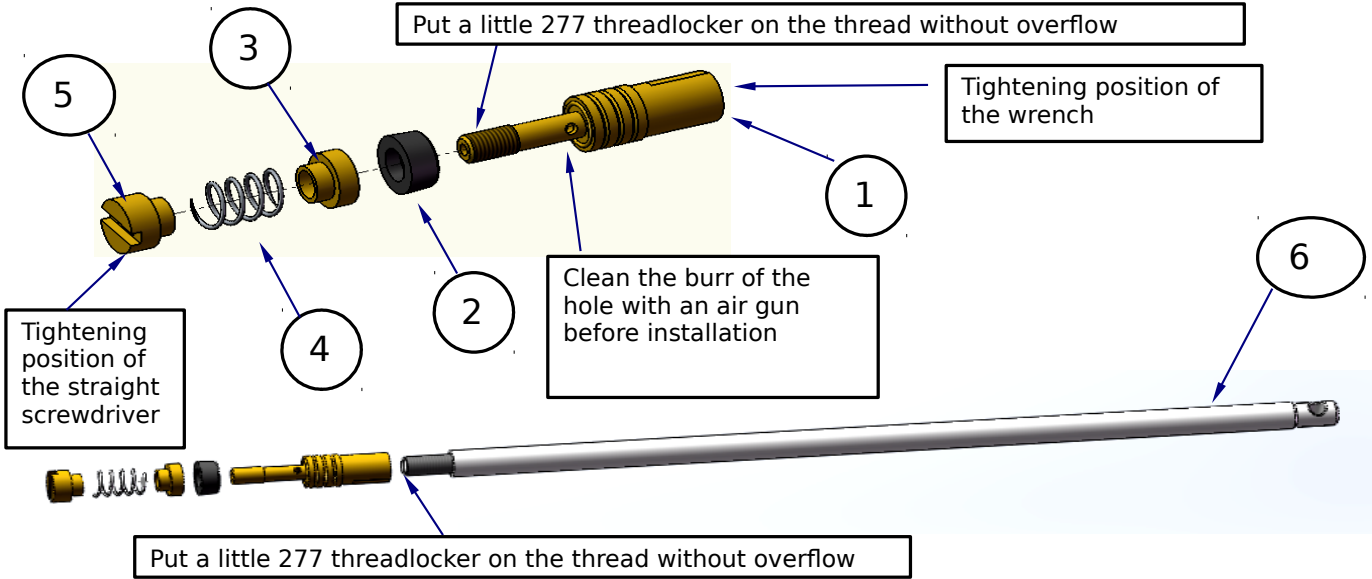
Date: August 2018

Video Code: V-P2B

Version: 1.0

Product Code: HP-M1000/HP-M900

Product Name: P2 (.177/.22)



No	Material Name	Material Code	Quantity	Remark
1	Small piston head	000P2-024-W-00	1	
2	Small piston head o-ring	000P2-050-X-00	1	
3	Small piston head sleeve	000P2-149-W-00	1	
4	Small piston head spring	000P2-150-W-00	1	
5	Small piston head screw	000P2-151-W-00	1	
6	Small piston rod	000P2-017-W-00	1	
7				
8				
9				
10				
11				
12				
13				
14				
15				

(C) Small tube assembly

Process Code: P2C

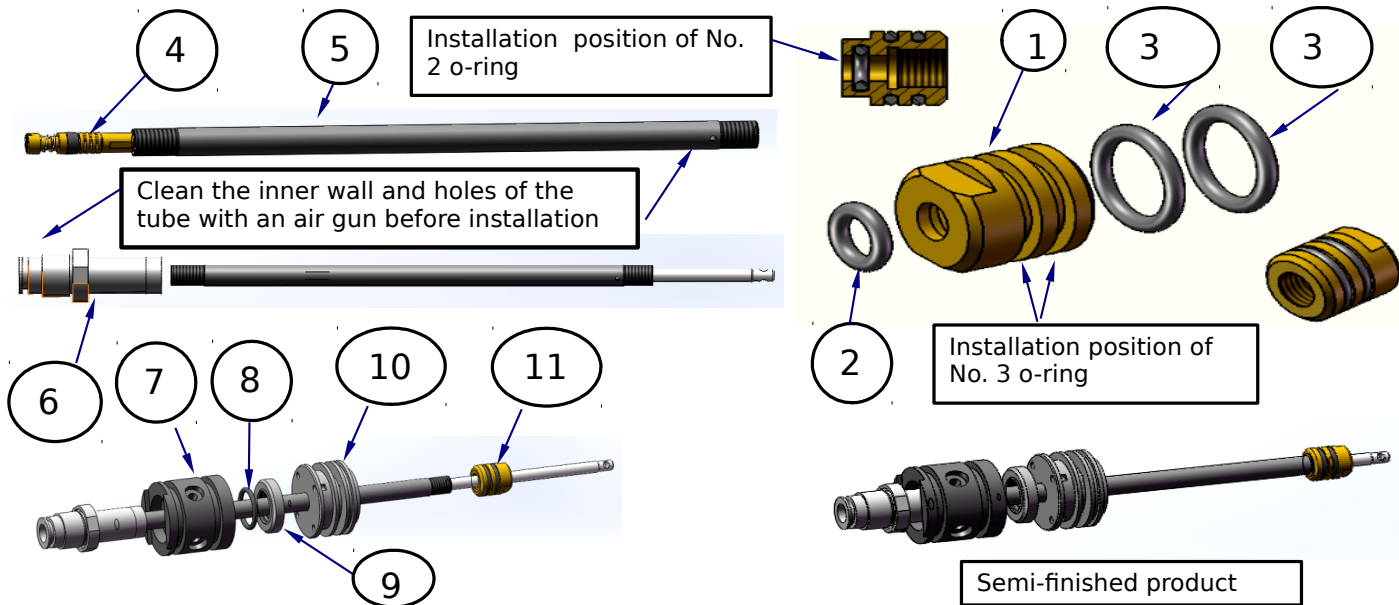
Date: August 2018

Video Code: V-P2C

Version: 1.0

Product Code: HP-M1000/HP-M900

Product Name: P2 (.177/.22)



No	Material Name	Material Code	Quantity	Remark
1	Small tube connecting sleeve	000P2-011-W-00	1	
2	NBR o-ring $\phi 2 \times \phi 14$ hardness 70°	000P2-006-X-00	2	
3	NBR o-ring $\phi 2 \times \phi 9$ hardness 90°	000P2-004-X-00	1	
4	Small piston semi-finished product	/	1	
5	Small tube	000P2-016-W-00	1	
6	Rear fixed axle semi-finished product	/	1	
7	Rear fixed sleeve semi-finished product	/	1	
8	NBR o-ring $\phi 2 \times \phi 17$ hardness 90°	000P2-018-X-00	1	
9	Rear fixed axle screw	000P2-019-W-00	1	
10	Rear movable sleeve semi-finished product	/	1	
11	Small tube connecting sleeve semi-finished product	/	1	
12				
13				
14				
15				

(D) Pump and desiccant assembly

Process Code: P2D

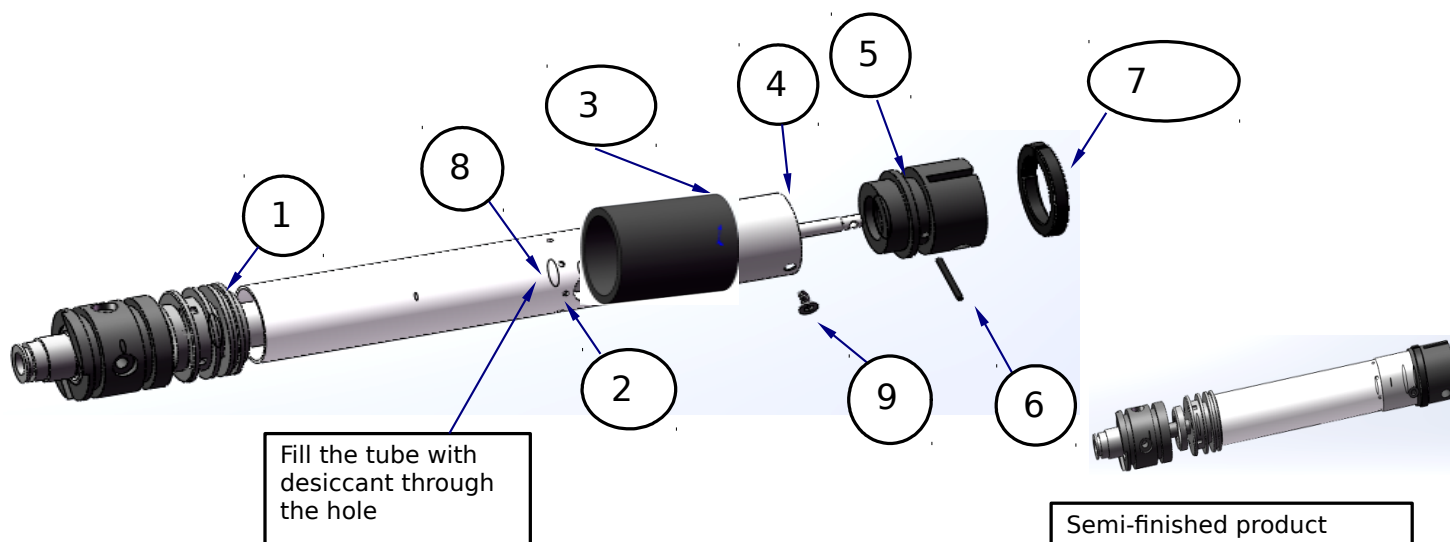
Date: August 2018

Video Code: V-P2D

Version: 1.0

Product Code: HP-M1000/HP-M900

Product Name: P2 (.177/.22)



No	Material Name	Material Code	Quantity	Remark
1	NBR o-ring $\phi 1.5 \times \phi 25$ hardness 70°	000P2-024-X-00	1	
2	Desiccant tube	000P2-029-W-00	1	
3	Air filter element	000P2-004-U-00	1	
4	Desiccant tube plug	000P2-031-W-00	1	
5	Front movable sleeve	000P2-010-W-00	1	
6	Front movable sleeve pin	000P2-025-W-00	1	
7	Front movable sleeve support ring	000P2-001-S-00	1	
8	Desiccant	000P2-030-W-00	35g	
9	Flat head allen screw M3×5	000P2-032-W-00	1	
10				
11				
12				
13				
14				
15				

(E) Pellet probe assembly

Process Code: P2E

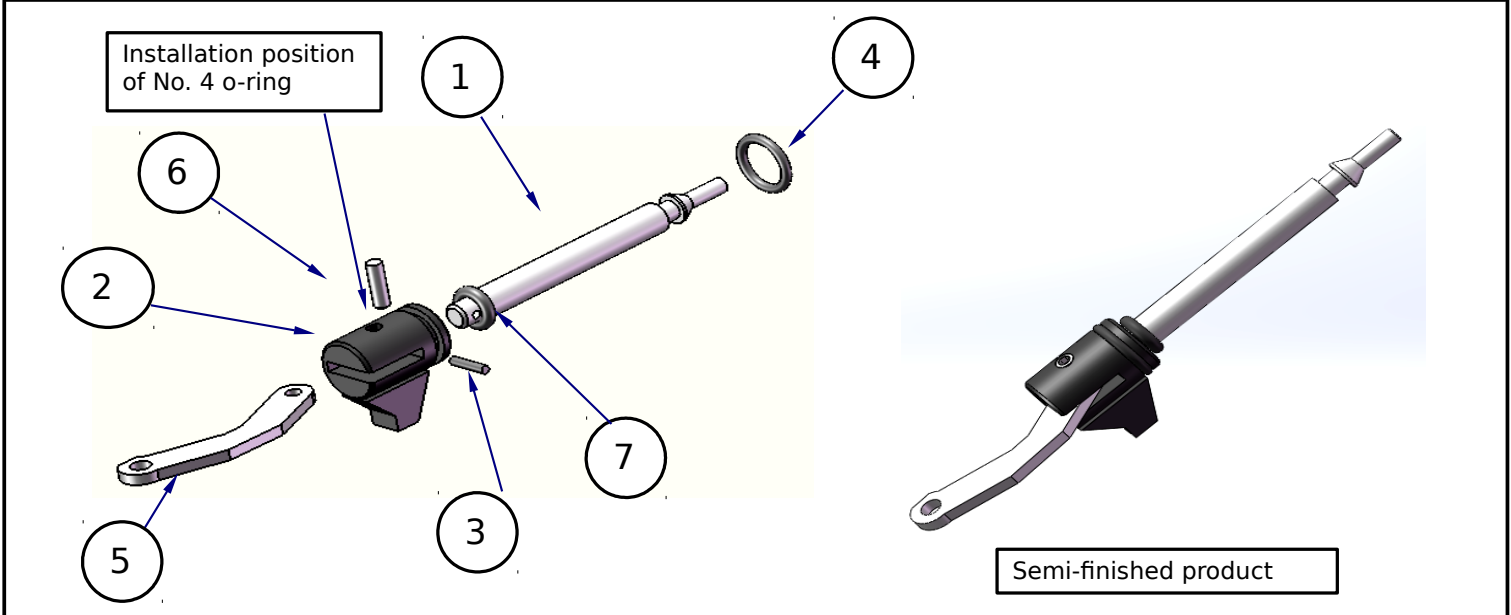
Date: August 2018

Video Code: V-P2E

Version: 1.0

Product Code: HP-M1000/HP-M900

Product Name: P2 (.177/.22)



No	Material Name	Material Code	Quantity	Remark
1	Pellet probe	000P1-058-W-00 (.177) / 000P1-028-W-00 (.22)	1	
2	Pellet probe seat	000P2-182-W-00	1	
3	Pellet probe seat pin $\phi 1.5 \times 7$ (45-h8)	000P2-064-W-00	1	
4	Pellet probe seat o-ring NBR $\phi 1.5 \times \phi 11$ hardness 90°	000P2-036-X-00	1	
5	Side lever action connecting rod	000P2-061-W-00	1	
6	Side lever action connecting rod front pin	000P2-183-W-00	1	
7	Pellet probe rear o-ring NBR $\phi 2 \times \phi 8$ hardness 90°	000P2-037-X-00	1	
8				
9				
10				
11				
12				
13				
14				
15				

(F) Hammer and spring assembly

Process Code: P2F

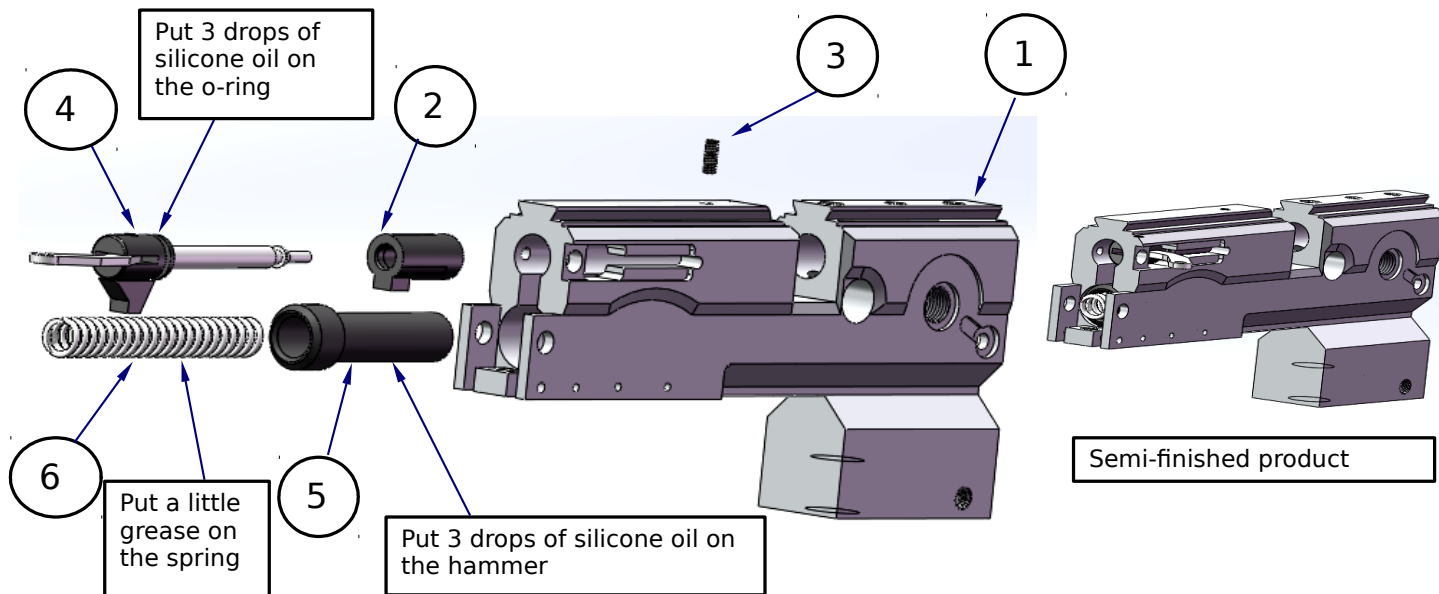
Date: August 2018

Video Code: V-P2F

Version: 1.0

Product Code: HP-M1000/HP-M900

Product Name: P2 (.177/.22)



No	Material Name	Material Code	Quantity	Remark
1	Aluminum valve body	/	1	
2	Pellet probe sleeve	000P1-025-S-00 (.177) / 000P1-008-S-00 (.22)	1	
3	Cone point allen screw M3×8	000P2-185-W-00	1	
4	Pellet probe semi-finished product	/	1	
5	Hammer	000P2-077-W-00	1	
6	Hammer spring P2	000P2-173-W-00	1	
7				
8				
9				
10				
11				
12				
13				
14				
15				

(G) Power adjustment valve assembly

Process Code: P2G

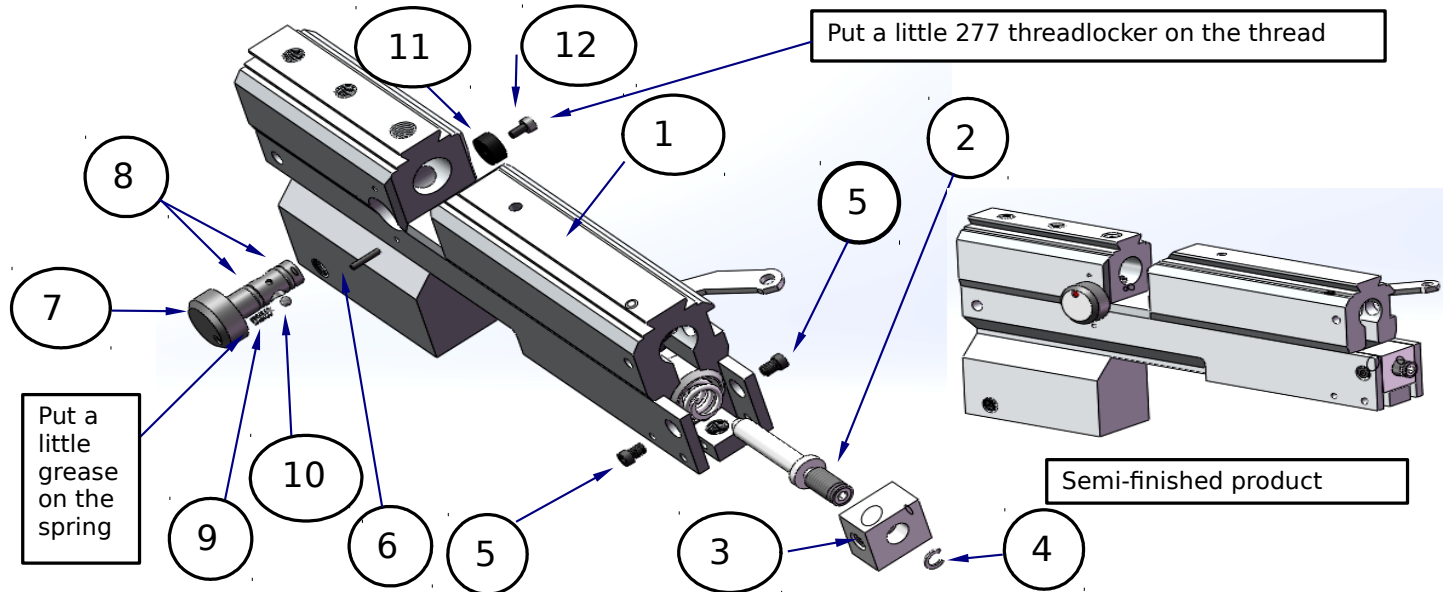
Date: August 2018

Video Code: V-P2G

Version: 1.0

Product Code: HP-M1000/HP-M900

Product Name: P2 (.177/.22)



No	Material Name	Material Code	Quantity	Remark
1	Side lever action semi-finished product aluminum valve body	/	1	
2	Hammer spring adjustment screw	000P2-174-W-00	1	
3	Cocking bracket 2	000P2-007-S-00	1	
4	Hammer spring adjustment screw clamp spring	000P2-154-W-00	1	
5	Allen screw M3×4	000P2-052-W-00	2	
6	Steel pin	000P1-027-W-00	1	
7	Power adjustment valve stem	000P2-043-W-00 (.177) / 000P1-030-W-00 (.22)	1	
8	Power adjustment valve o-ring NBR φ1.5×φ7	000P2-031-X-00	2	
9	Power adjustment valve spring φ0.32×φ2.32×6.34	000P2-045-W-00	1	
10	Bearing steel ball φ2.5	000P1-044-W-00	1	
11	Power adjustment valve washer	000P2-005-S-00	1	
12	Round head allen screw M2×4	000P1-042-W-00	1	
13				
14				
15				



(H) Side lever action handle assembly

Process Code: P2H

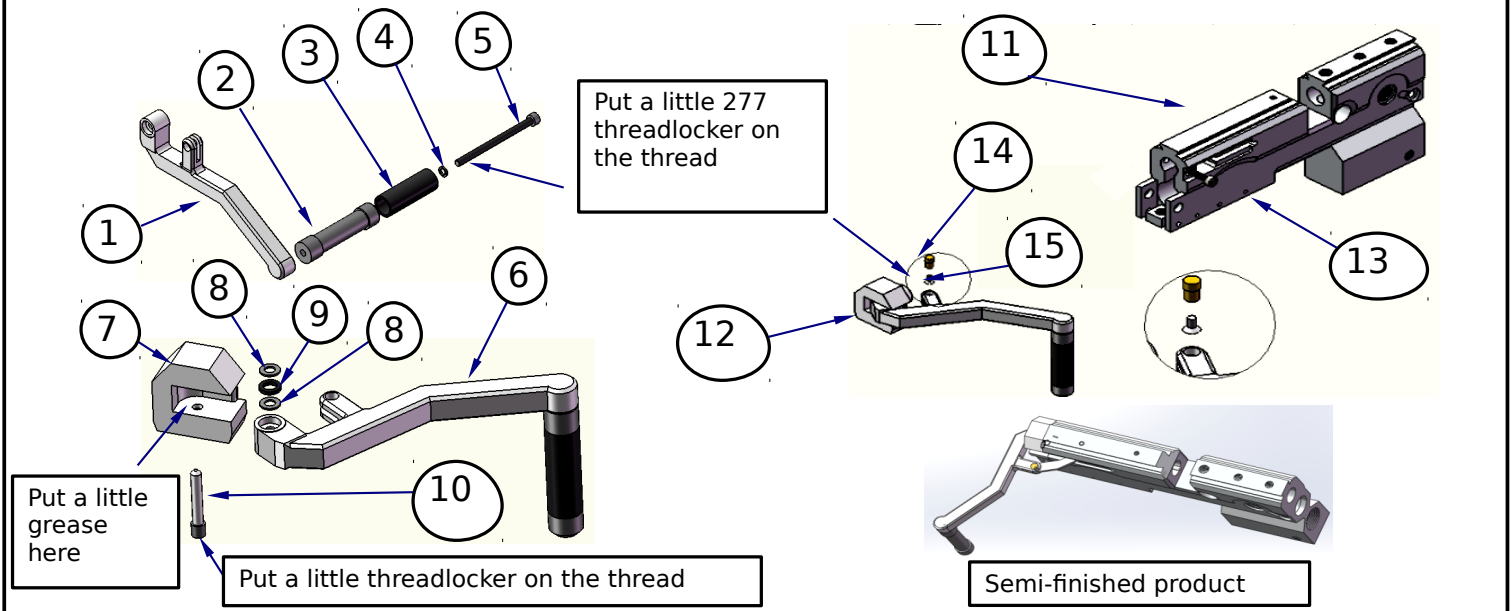
Date: August 2018

Video Code: V-P2H

Version: 1.0

Product Code: HP-M1000/HP-M900

Product Name: P2 (.177/.22)



No	Material Name	Material Code	Quantity	Remark
1	Side lever action pull rod (vertical)	000P2-063-W-00	1	
2	Side lever action handle	000P2-133-W-00	1	
3	Side lever action handle sleeve	000P2-040-X-00	1	
4	Standard spring washer $\phi 3.1 \times 4.7 \times 0.8$	000P2-135-W-00	1	
5	Round head allen screw M3 $\times$ 45	000P2-134-W-00	1	
6	Side lever action pull rod semi-finished product	/	1	
7	Cocking bracket 1	000P2-082-W-00	1	
8	Small flat washer $\phi 3.2 \times \phi 6 \times 0.5$	000P2-066-W-00	1	
9	Standard spring washer $\phi 4.1 \times \phi 6.3 \times 1.1$	000P2-067-W-00	2	
10	Cocking bracket 1 vertical pin	000P2-084-W-00	1	
11	Aluminum valve body semi-finished product	/	1	
12	Side lever action pull rod semi-finished product	/	1	
13	Round head allen screw M3 $\times$ 15	000P2-083-W-00	1	
14	Side lever action pull rod rear screw	000P2-062-W-00	1	
15	Flat head philips screw	000P2-065-W-00	1	

(I) Safety assembly

Process Code: P21

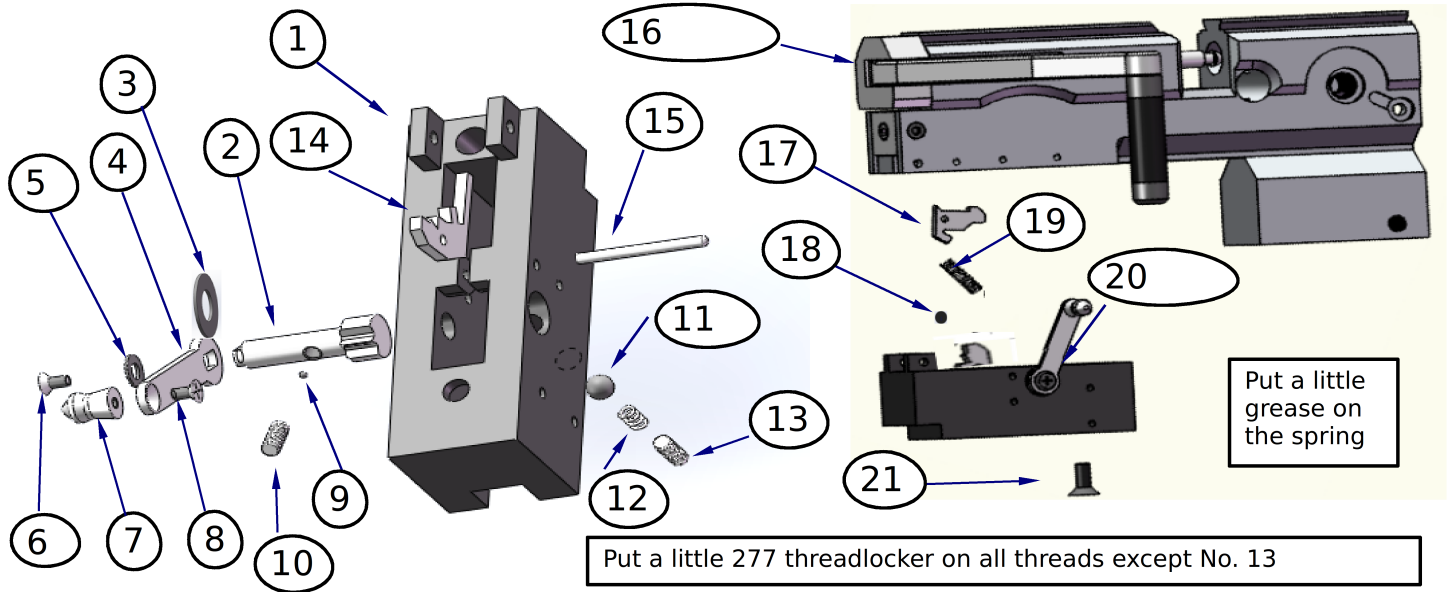
Date: August 2018

Video Code: V-P21

Version: 1.0

Product Code: HP-M1000/HP-M900

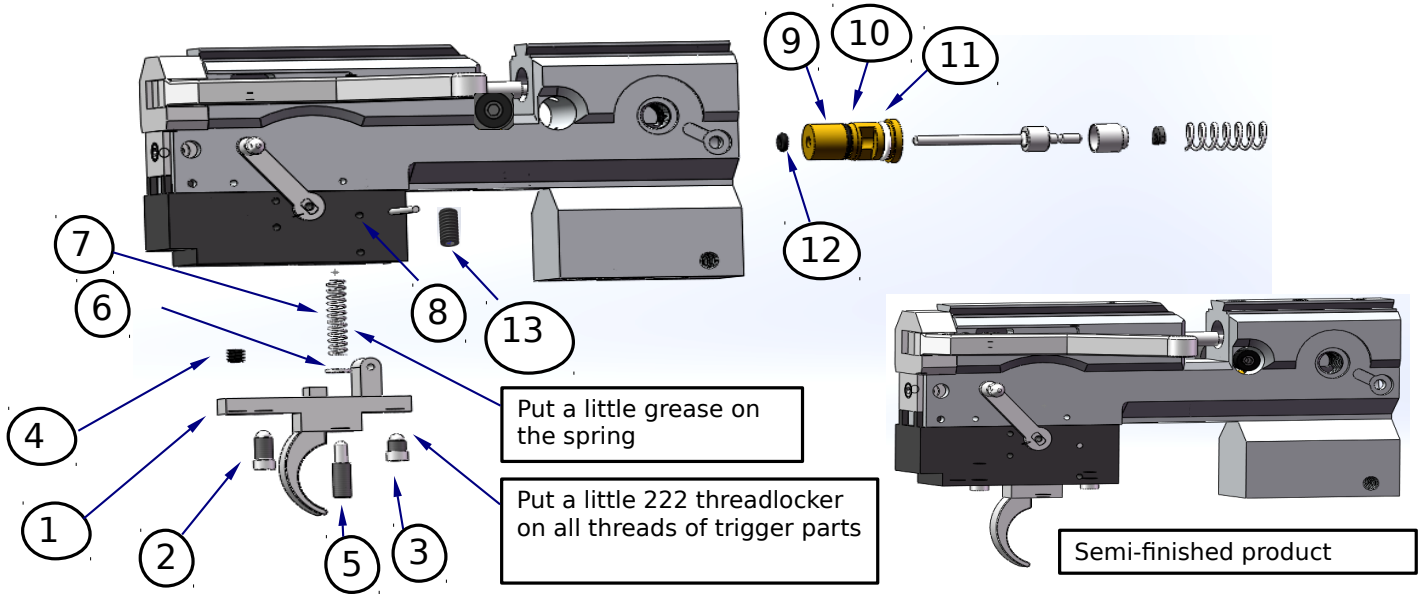
Product Name: P2 (.177/.22)



No	Material Name	Material Code	Quantity	Remark
1	Cocking bracket 3	000P2-008-S-00	1	
2	Safety stem	000P2-073-W-00	1	
3	Safety washer	000P2-160-W-00	1	
4	Safety rod	000P2-069-W-00	1	
5	Flat washer $\phi 3 \times \phi 6.5 \times 0.5$	000P2-066-W-00	1	
6	Flat head philips screw M2x5	000P2-070-W-00	1	
7	Safety knob	000P2-068-W-00	1	
8	Flat head philips screw M2x5	000P2-070-W-00	1	
9	Steel ball $\phi 1.2$	000P2-162-W-00	1	
10	Flat point allen screw M3x10	000P2-089-W-00	1	
11	Bearing steel ball	000P2-163-W-00	1	
12	Safety spring	000P2-071-W-00	1	
13	Flat point allen screw M5x5	000P2-155-W-00	1	
14	Trigger iron	000P2-080-W-00	1	
15	Aluminum valve body horizontal pin 1	000P2-091-W-00	1	
16	Aluminum valve body semi-finished product	/	1	
17	Sear	000P2-081-W-00	1	
18	Aluminum valve body horizontal pin 1	000P2-091-W-00	1	
19	Sear spring	000P2-159-W-00	1	
20	Safety semi-finished product	/	1	
21	Flat head allen screw M4x8	000P2-076-W-00	1	

(J) Trigger and air release valve assembly

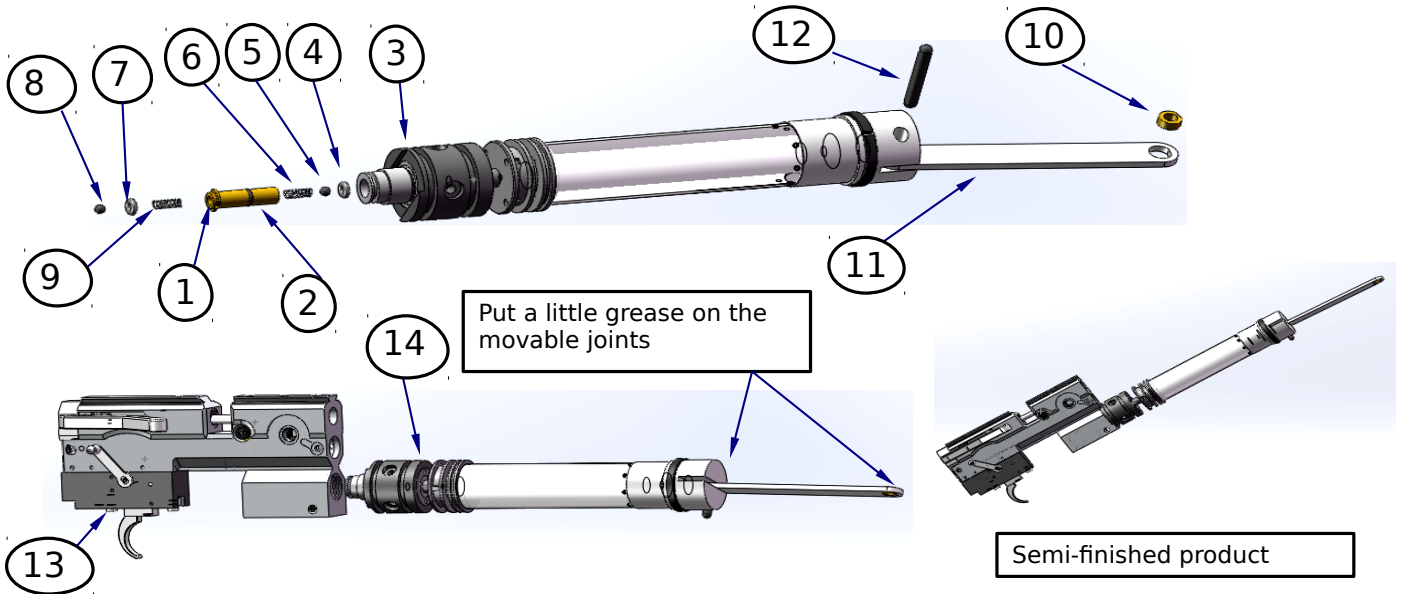
Process Code: P2J	Date: August 2018
Video Code: V-P2J	Version: 1.0
Product Code: HP-M1000/HP-M900	Product Name: P2 (.177/.22)



No	Material Name	Material Code	Quantity	Remark
1	Trigger	000P2-074-W-00	1	
2	Trigger bracket adjustment screw 2	000P2-088-W-00	1	
3	Trigger bracket adjustment screw 1	000P2-092-W-00	1	
4	Flat point allen screw M5×4 (grade 10.9)	/	1	
5	Trigger pull adjustment screw	000P2-144-W-00	1	
6	Trigger pull adjustment flat washer	000P2-143-W-00	1	
7	Trigger spring	000P2-158-W-00	1	
8	Aluminum valve body horizontal pin 1	000P2-091-W-00	1	
9	Air release valve sleeve	000P2-125-W-00	1	
10	NBR o-ring φ1.5×11 hardness 90°	000P2-008-X-00	1	
11	PU o-ring φ1.5×12 hardness 90°	000P2-048-X-00	1	
12	NBR o-ring φ1.5×6 hardness 90°	000P2-034-X-00	1	
13	Cone point allen screw M4×8	000P2-059-W-00	1	
14				
15				

(K) Aluminum valve body and pump assembly

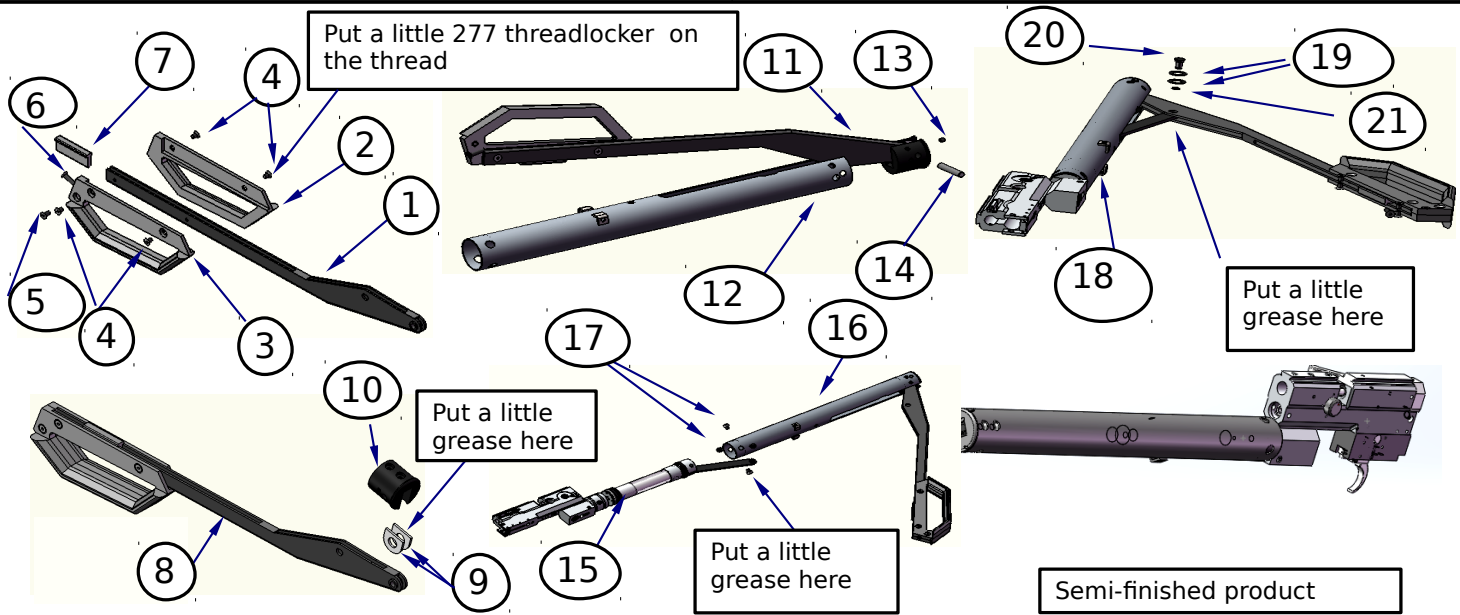
Process Code: P2K	Date: August 2018
Video Code: V-P2K	Version: 1.0
Product Code: HP-M1000/HP-M900	Product Name: P2 (.177/.22)



No	Material Name	Material Code	Quantity	Remark
1	Check valve copper sleeve	000P2-022-W-00	1	
2	NBR o-ring $\phi 7 \times \phi 1.5$ hardness 90°	000P1-010-X-00	1	
3	Pump semi-finished product	/	1	
4	NBR o-ring $\phi 2.5 \times \phi 7.5$ hardness 90°	000P2-009-X-00	1	
5	Bearing steel ball $\phi 4$	000P2-148-W-00	1	
6	Air reservoir front plug check valve spring $\phi 0.5 \times \phi 2.6 \times 10$	000P2-053-W-00	1	
7	NBR o-ring $\phi 2.5 \times \phi 7.5$ hardness 90°	000P2-009-X-00	1	
8	Bearing steel ball $\phi 4$	000P2-148-W-00	1	
9	Air reservoir front plug check valve spring $\phi 0.5 \times \phi 2.6 \times 10$	000P2-053-W-00	1	
10	Connecting rod copper sleeve	000P2-006-W-00	1	
11	Connecting rod	000P2-007-W-00	1	
12	Connecting rod rear pin	000P2-008-W-00	1	
13	Aluminum valve body semi-finished product	/	1	
14	Pump semi-finished product	/	1	
15				

(L) Aluminum valve body and big tube assembly

Process Code: P2L	Date: August 2018
Video Code: V-P2L	Version: 1.0
Product Code: HP-M1000/HP-M900	Product Name: P2 (.177/.22)



No	Material Name	Material Code	Quantity	Remark
1	Pump handle	000P2-004-W-00	1	
2	Left handle P2	000P2-013-S-00	1	
3	Right handle P2	000P2-014-S-00	1	
4	Flat head allen screw M4×6	000P2-112-W-00	4	
5	Flat head allen screw M4×8	000P2-110-W-00	1	
6	Flat head allen screw M4×16	000P2-111-W-00	1	
7	Pump handle cushion rubber	000P2-058-X-00	1	
8	Pump handle semi-finished product	/	1	
9	Pump handle washer	000P2-034-W-00	1	
10	Air reservoir front fixed sleeve	000P2-001-W-00	1	
11	Pump handle semi-finished product	/	1	
12	Big tube	000P2-012-W-00	1	
13	Big tube pin	000P2-003-W-00	1	
14	Cone point allen screw M4×8	000P2-059-W-00	1	
15	Pump semi-finished product	/	1	
16	Pump handle semi-finished product	/	1	
17	Allen screw M5×5	000P2-033-W-00	4	
18	Pump semi-finished product	/	1	
19	Connecting rod washer	000P2-028-W-00	2	
20	Connecting rod front pin	000P2-005-W-00	1	
21	Clamp spring smap washer type-E	642258-009-W-00	1	

(M) Air chamber extension tube assembly

Process Code: P2M

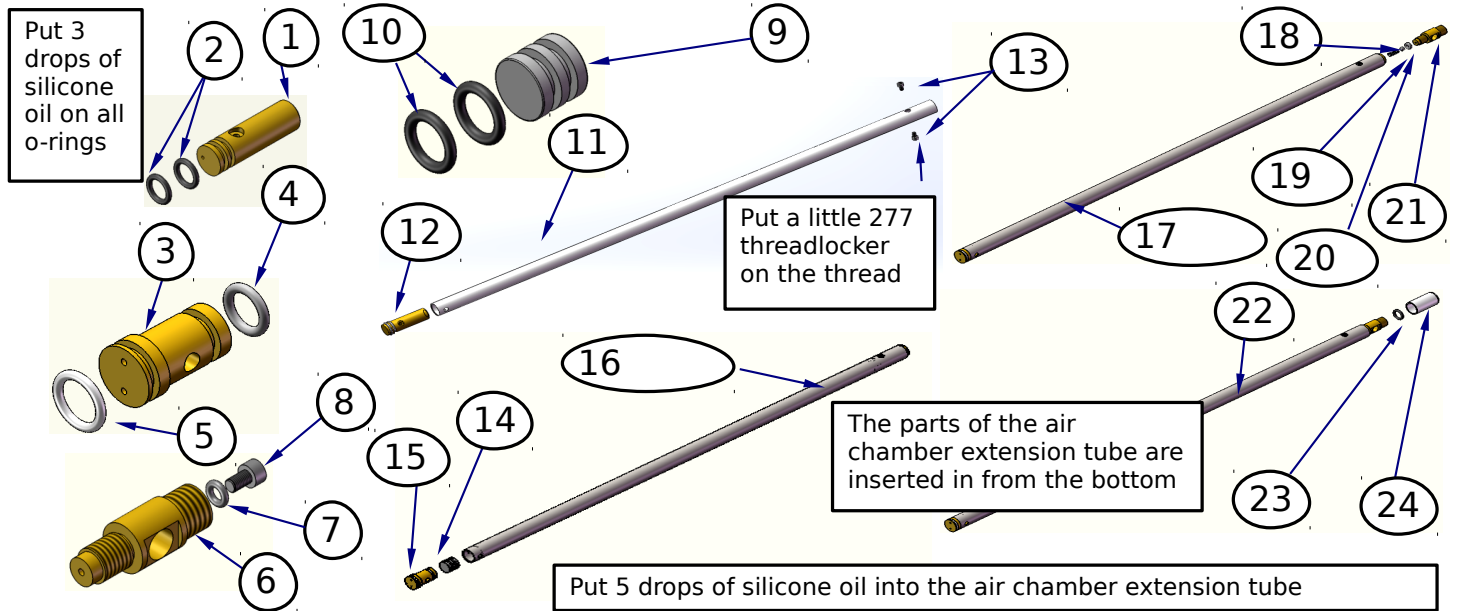
Date: August 2018

Video Code: V-P2M

Version: 1.0

Product Code: HP-M1000/HP-M900

Product Name: P2 (.177/.22)



No	Material Name	Material Code	Quantity	Remark
1	Air chamber extension tube front connector	000P2-051-W-00	1	
2	NBR o-ring $\phi 2 \times \phi 12$ hardness 90°	000P2-048-X-00	2	
3	Air chamber extension tube rear connector	000P2-046-W-00	1	
4	PU o-ring $\phi 2 \times \phi 12$	000P2-007-X-00	1	
5	PU o-ring $\phi 2 \times \phi 14$ hardness 90°	000P2-007-X-00	1	
6	Air chamber extension tube check valve fixed axle	000P2-055-W-00	1	
7	NBR o-ring $\phi 1.5 \times \phi 6$ hardness 90°	000P2-034-X-00	1	
8	Allen screw M3×5	000P2-057-W-00	1	
9	Air chamber extension tube Piston	000P2-050-W-00	1	
10	NBR o-ring $\phi 2 \times \phi 12$ hardness 90°	000P2-048-X-00	2	
11	Air chamber extension tube	000P2-049-W-00	1	
12	Air chamber extension tube front connector semi-finished product	/	1	
13	Allen screw M3×4	000P2-052-W-00	1	
14	Air chamber extension tube Piston semi-finished product	/	1	
15	Air chamber extension tube rear connector semi-finished product	/	1	
16	Air chamber extension tube semi-finished product	/	1	
17	Air chamber extension tube semi-finished product	/	1	
18	Check valve spring (new)	000P2-179-W-00	1	
19	Steel ball $\phi 4$	000P2-054-W-00	1	
20	NBR o-ring $\phi 2.5 \times \phi 7.5$ hardness 90°	000P2-009-X-00	1	
21	Air chamber extension tube check valve fixed axle semi-finished product	/	1	
22	Air chamber extension tube semi-finished product	/	1	
23	NBR o-ring $\phi 2 \times \phi 14$ hardness 90°	000P2-007-X-00	1	
24	Air chamber extension tube air inlet cap	000P2-056-W-00	1	

(N) Aluminum valve body and extension tube assembly

Process Code: P2N

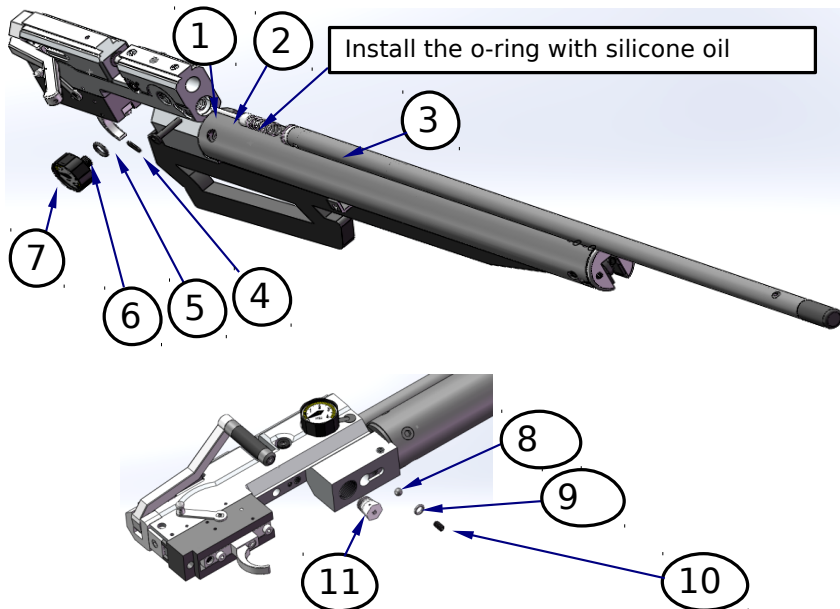
Date: August 2018

Video Code: V-P2N

Version: 1.0

Product Code: HP-M1000/HP-M900

Product Name: P2 (.177/.22)



Semi-finished product

No	Material Name	Material Code	Quantity	Remark
1	Air release valve stem	/	1	
2	Air release valve spring	000P2-101-W-00	1	
3	Air chamber extension tube semi-finished product	/	1	
4	Air chamber extension tube rear pin	000P2-047-W-00	1	
5	Air chamber extension tube baffle	000P2-048-W-00	1	
6	PU o-ring $\phi 12 \times \phi 2$ hardness 90°	000P2-048-X-00	1	
7	Pressure gauge P2	000P2-001-U-00	1	
8	Bearing steel ball	000P2-148-W-00	1	
9	Pellet probe o-ring	0PCP1-001-X-00 (.177) / 0PCP1-004-X-00 (.22)	1	
10	Flat point allen screw M5×6	000P2-184-W-00	1	
11	Safety valve 4.5K	000P2-181-W-00	1	
12				
13				
14				
15				

(O) Inner barrel assembly

Process Code: P20

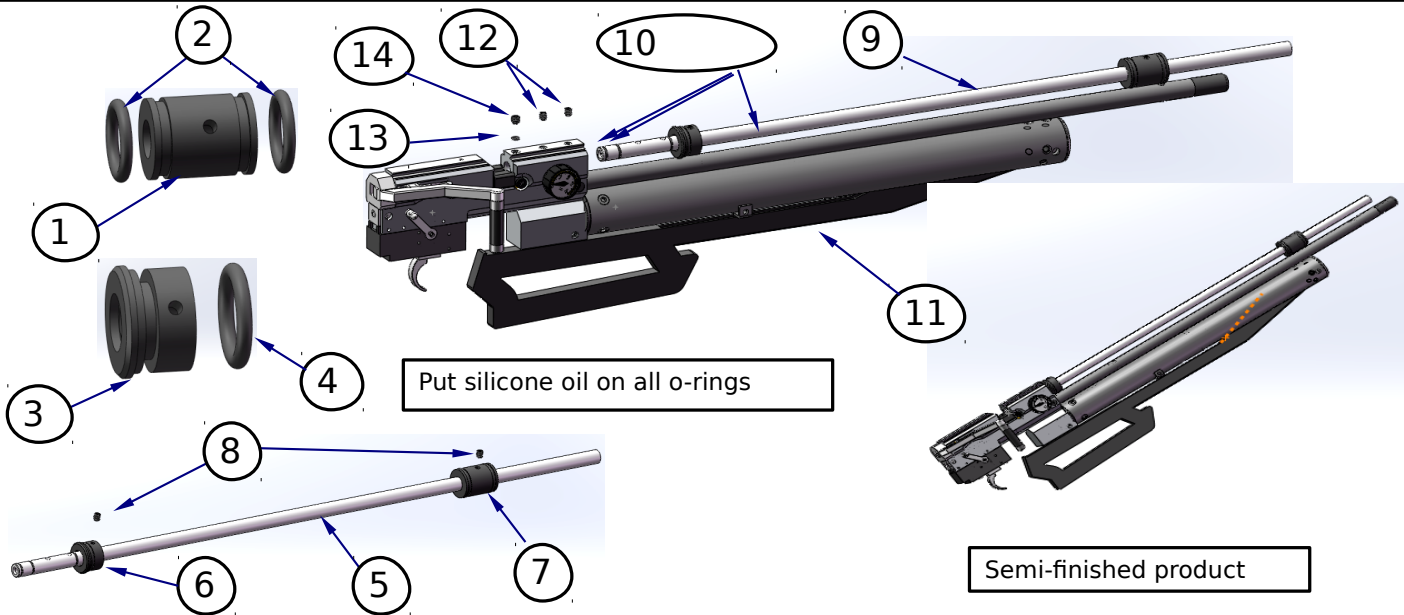
Date: August 2018

Video Code: V-P20

Version: 1.0

Product Code: HP-M1000/HP-M900

Product Name: P2 (.177/.22)



No	Material Name	Material Code	Quantity	Remark
1	Shroud barrel front support sleeve	000P2-003-S-01	1	
2	NBR o-ring $\phi 3 \times 23$ hardness 70°	000P2-028-X-00	1	
3	Shroud barrel rear support sleeve	000P2-004-S-00	1	
4	NBR o-ring $\phi 3 \times 23$ hardness 70°	000P2-028-X-00	1	
5	Inner barrel (P1/P2)	000P2-040-W-00 (.177) / 000P1-031-W-00 (.22)	1	
6	Shroud barrel rear support sleeve semi-finished product	/	1	
7	Shroud barrel front support sleeve semi-finished product	/	1	
8	Cone point allen screw M4×6×120° (cone)	000P2-036-W-00	2	
9	Inner barrel semi-finished product	/	1	
10	NBR o-ring $\phi 1.5 \times 11$ hardness 90°	000P2-029-X-00	3	
11	Gun body semi-finished product	/	1	
12	Cone point allen screw M5×8×120° (cone)	000P2-038-W-00	1	
13	NBR o-ring $\phi 1.5 \times 5.5$ hardness 90°	000P2-030-X-00	1	
14	Cone point allen point M6×6×120° (cone)	000P2-039-W-00	1	
15				



(P) Shroud barrel assembly

Process Code: P2P

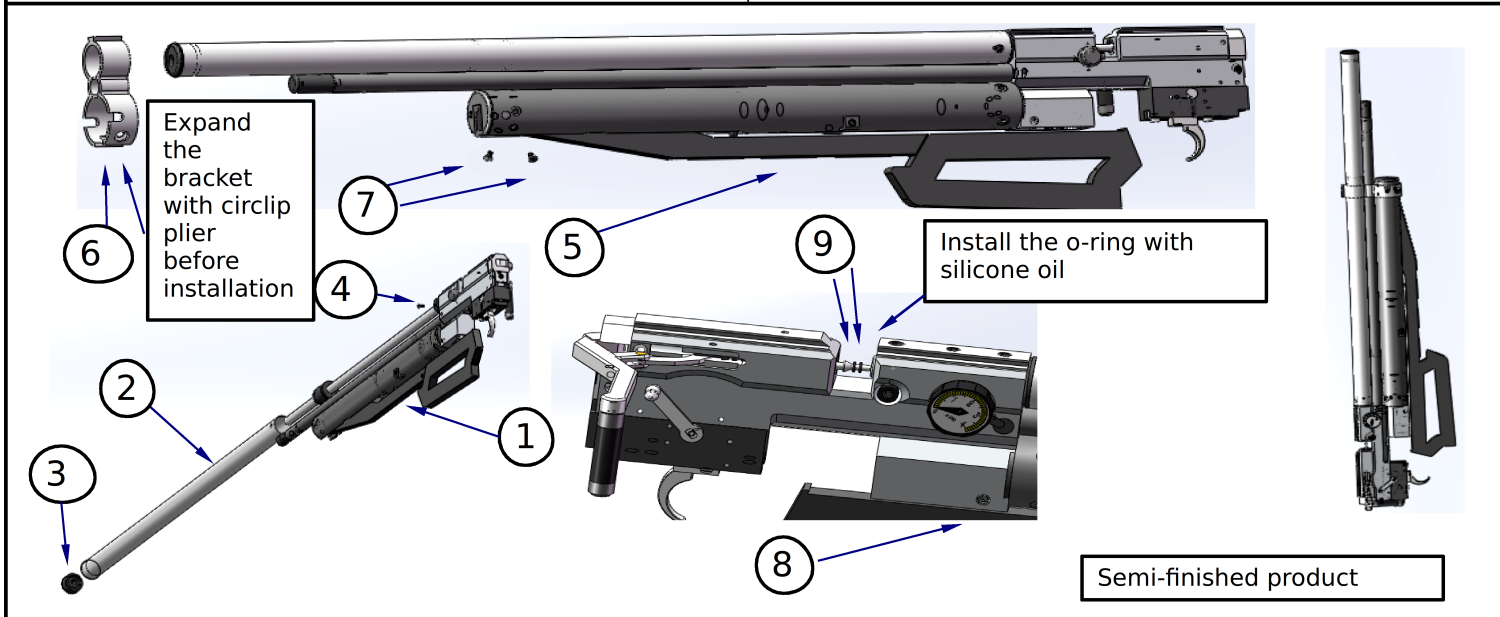
Date: August 2018

Video Code: V-P2P

Version: 1.0

Product Code: HP-M1000/HP-M900

Product Name: P2 (.177/.22)



No	Material Name	Material Code	Quantity	Remark
1	Gun body semi-finished product	/	1	
2	Shroud barrel	000P2-035-W-00	1	
3	Shroud barrel front plug	000P2-002-S-00	1	
4	Flat head allen screw M3×5	000P2-032-W-00	1	
5	Gun body semi-finished product	/	1	
6	Big tube front bracket	000P2-156-W-00	1	
7	Flat head allen screw M5×10	000P2-002-W-00	2	
8	Gun body semi-finished product	/	1	
9	Pellet probe o-ring	0PCP1-001-X-00 (.177) / 0PCP1-004-X-00 (.22)	2	
10				
11				
12				
13				
14				
15				

(Q) Rear stock assembly

Process Code: P2Q

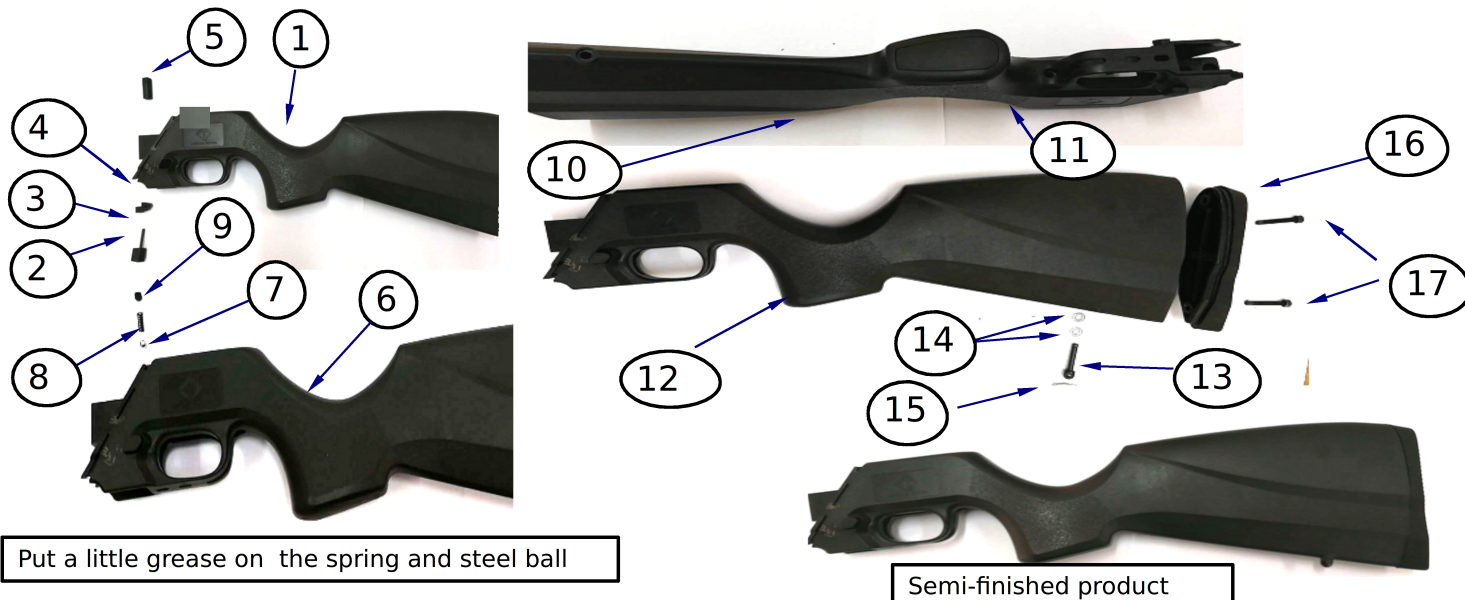
Date: August 2018

Video Code: V-P2Q

Version: 1.0

Product Code: HP-M1000/HP-M900

Product Name: P2 (.177/.22)



No	Material Name	Material Code	Quantity	Remark
1	Rear stock P2	000P2-015-S-00	1	
2	Pump handle lock part A	000P2-016-S-00	1	
3	Pin	000P2-118-W-00	1	
4	Pump handle lock part B	000P2-017-S-00	1	
5	Pump handle lock part C	000P2-018-S-00	1	
6	Rear stock semi-finished product P2	/	1	
7	Bearing steel ball $\phi 4.4$	000P2-163-W-00	1	
8	Pump handle lock sprint	000P2-165-W-00	1	
9	Flat point allen screw M6x8	000P2-164-W-00	1	
10	Rear stock semi-finished product P2	/	1	
11	Rear stock bottom cap	000P2-024-S-00	1	
12	Rear stock semi-finished product P2	/	1	
13	Rear sling swivel	000P2-015-Z-00	1	
14	Washer M5	000P2-116-W-00	2	
15	Split pin	000P2-122-W-00	1	
16	Butt pad P2	000P2-022-S-00	1	
17	Round head allen screw M5x32	000P2-115-W-00	2	

(R) Gun body and rear stock assembly

Process Code: P2R

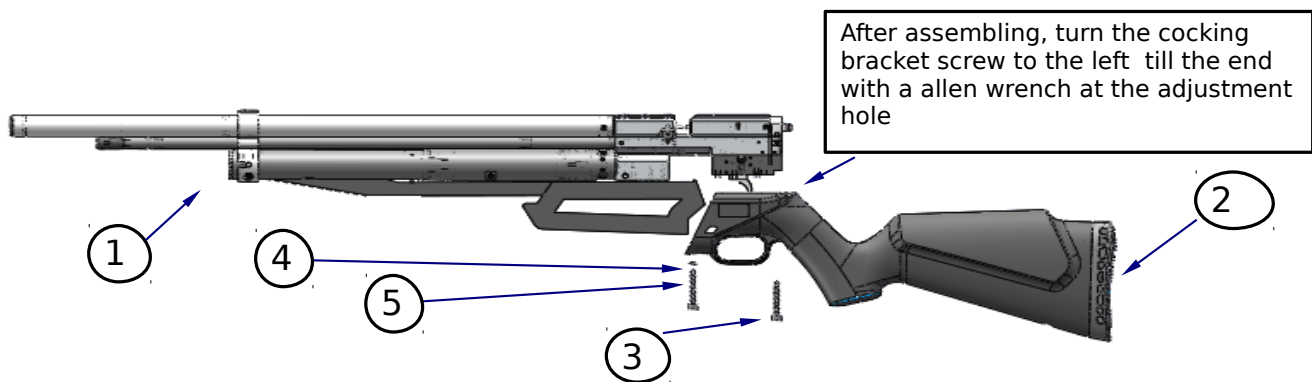
Date: August 2018

Video Code: V-P2R

Version: 1.0

Product Code: HP-M1000/HP-M900

Product Name: P2 (.177/.22)



No	Material Name	Material Code	Quantity	Remark
1	Gun body semi-finished product	/	1	
2	Rear stock semi-finished product	/	1	
3	Round head allen screw M5×32	000P2-115-W-00	1	
4	Spring washer M5	000P2-117-W-00	1	
5	Round head allen screw M5×28	000P2-114-W-00	1	
6				
7				
8				
9				
10				
11				
12				
13				
14				
15				

(S) Leakage and pre-pressure test

Process Code: P2S

Date: August 2018

Video Code: V-P2S

Version: 1.0

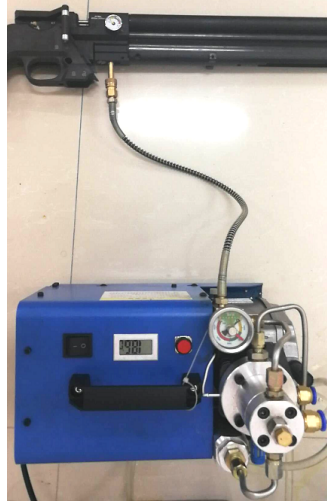
Product Code: HP-M1000/HP-M900

Product Name: P2 (.177/.22)

After filling air of 1700PSI, hand pump 60 times, the standard pressure range must be  $3000 \pm 300$ PSI



Pre-pressure test



Leakage test

Stay 24H after filling air of 3000PSI, the standard pressure range after 24H must be  $3000 \pm 300$ PSI

No	Material Name	Material Code	Quantity	Remark
1				
2				
3				
4				
5				
6				
7				
8				
9				
10				
11				
12				
13				
14				
15				

(T) Front stock cover assembly

Process Code: P2T

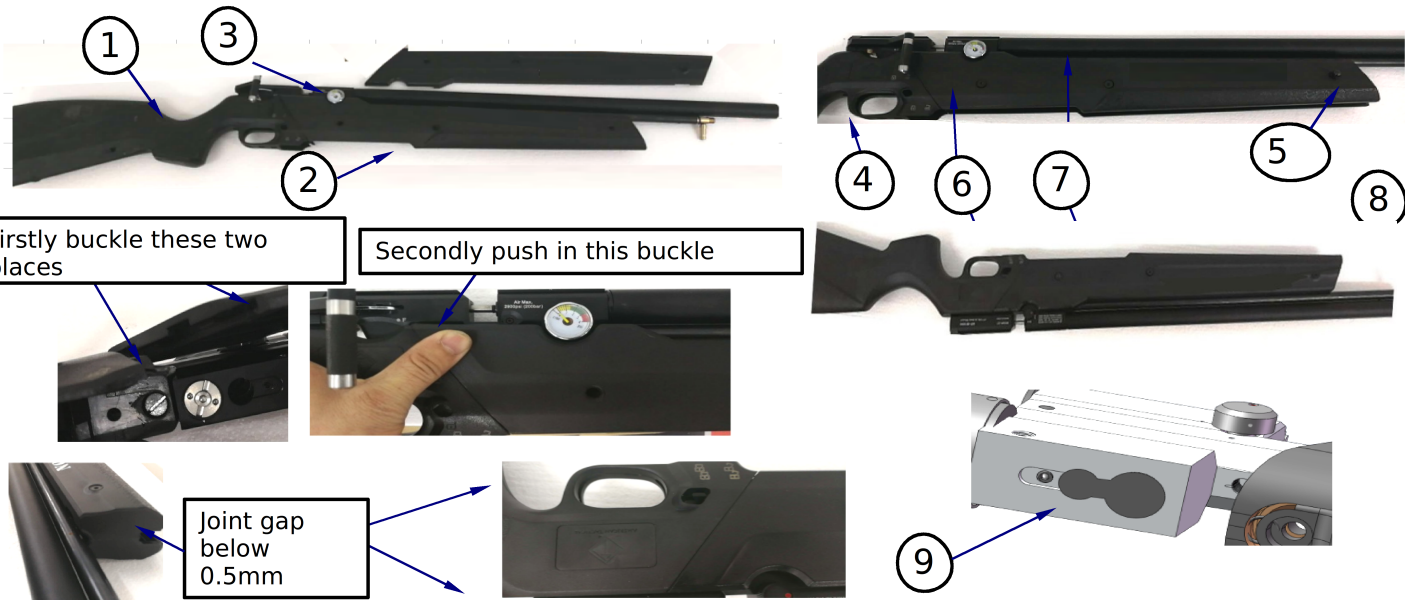
Date: August 2018

Video Code: V-P2T

Version: 1.0

Product Code: HP-M1000/HP-M900

Product Name: P2 (.177/.22)



No	Material Name	Material Code	Quantity	Remark
1	Gun body semi-finished product	/	1	
2	Right front stock cover P2	000P2-012-S-00	1	
3	Left front stock cover P2	000P2-011-S-00	1	
4	Gun body semi-finished product	/	1	
5	Front sling swivel	/	1	
6	Flat head allen screw M5×16	000P2-111-W-00	2	
7	Flat head allen screw M5×8	000P2-110-W-00	2	
8	Flat head allen screw M5×14	000P2-109-W-00	1	
9	Fill soft plug P2 (new)	000P2-057-X-00	1	
10				
11				
12				
13				
14				
15				

(U) Spare parts and packaging

Process Code: P2U

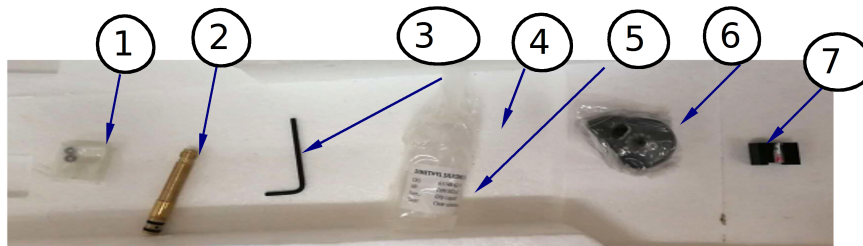
Date: August 2018

Video Code: V-P2U

Version: 1.0

Product Code: HP-M1000/HP-M900

Product Name: P2 (.177/.22)



The position of oil bottle

The position of magazine

The position of scope



The position of fill probe and allen wrench

The position of o-ring

The position of single shot tray

No	Material Name	Material Code	Quantity	Remark
1	Pellet probe o-ring	OPCP1-001-X-00 (.177) / OPCP1-004-X-00 (.22)	2	
2	Fill probe P2	/	1	
3	Allen wrench 2.5mm	000P2-128-W-00	1	
4	Oil bottle P2 (containing oil)	000P2-010-B-00	1	
5	Oil bottle label	000P2-010-B-01	1	
6	Magazine	HPA1000-007-Z-00 (.177) / HPA1000-010-Z-00 (.22)	1	
7	Single shot tray	/	1	
8	Scope 4x32	000P2-176-W-00	1	
9	Polyfoam bottom cover P2	000P2-004-B-00	1	
10				
11				
12				
13				
14				
15				